

CHAPTER 3

OPTIONS

3.1 CABIN.

See Figure 3-1-1. The control console is an integral part of the cabin. It is located in the forward starboard corner of the cabin. Access is provided to the batteries and equipment (located within the console) through two hinged access hatches: one located on the port side of the console within the cabin, the other located on the forward face of the console outside the cabin. The steering wheel, compass, switch panel and engine instruments are all mounted on the control face of the console. The engine control box is mounted on the starboard side of the console. A roof vent, dome light and windshield wipers are standard equipment.

The cabin is constructed with marine grade aluminum. Sliding aluminum framed windows are installed on both sides and fixed frame windows are installed of forward face. The aft optional bulkhead of the cabin can be constructed either from aluminum, complete with window and lockable door, or fabric, held in place with snaps with a zippered roll up door and fabric window.

WARNING

ENCLOSED CABINS OR COCKPITS MAY ACCUMULATE CARBON MONOXIDE. YOU CAN BE OVERCOME BY FUMES FROM YOUR OWN ENGINE OR FROM NEIGHBOURING BOATS. ENSURE CONTINUOUS MOVEMENT OF FRESH AIR.

The entire structure is mechanically fastened to the deck amidships.

3.2 PATROL CONSOLE.

A variety of aluminum and fibreglass reinforced plastic (FRP) patrol consoles are available for outboard and inboard/outboard (IO) Rescue Boat models. All consoles

house the steering and engine controls as well as engine instrumentation. Some of these consoles are model specific. The standard consoles available are:

1. Aluminum patrol console (see Figure 3-2-1)..
2. FRP patrol console (see Figure 3-2-2).
3. Large FRP patrol console (see Figure 3-2-3).
4. 733 IO FRP patrol console (see Figure 3-2-4).
5. 733 MID IO aluminum patrol console (see Figure 3-2-5).
6. 630 MID IO aluminum patrol console (see Figure 3-2-6).

All patrol consoles are equipped with windshields. The patrol consoles (numbers one, two and three above) are equipped with hatches to access the the inside of the console for storage access and maintenance or repair work. The mid engine inboard/outboard(IO) patrol boat consoles (numbers four, five and six above) double as engine covers and hinge open to provide access to the engine compartment.

T-tops and console mounted RADAR frames are available on some consoles.

3.3 INLINE CONSOLE.

A variety fibreglass reinforced plastic (FRP) inline consoles are available for outboard and aft engine inboard/outboard (IO) Rescue Boat models. All consoles house the steering and engine controls as well as engine instrumentation. Some of these consoles are model specific. The standard consoles available are:

1. Inline console (see Figure 3-3-1).
2. Delta console (see Figure 3-3-2).
3. Small boat console (see Figure 3-3-2).

The inline console (number one above) is designed to house two portable fuel tanks under.

The Delta console (number two above) consists of a helm pod with an opening top to provide access for storage and maintenance or repair. The helm pod can be installed alone or with one or more navigation pods. Both the helm and navigation pods provide storage space.

3.4 BOLSTERS, SEATING AND STORAGE LOCKERS.

See Figure 3-4-1. Painted aluminum bolsters, seats and storage lockers are available in a variety of configurations. All are mechanically fastened to the deck. Cushions are supplied for sitting or leaning surfaces.

3.5 BOW BOX.

See Figure 3-5-1. Fibreglass reinforced plastic (FRP) bow storage/fuel filling boxes are available for Rescue Boat models 590, 630 and 733. These provide storage space and replace the fuel fill pods (see section 2.2) on these models. The lid tops on all are finished with non-skid surfaces.

3.6 BOW POST.

An aluminum bow post with bollard is located on the foredeck. It is bolted into underdeck aluminum. This may be utilized for towing or mooring purposes.

3.7 TOW POST.

On outboard models, aluminum tow post with bollard is located on the aft deck. It is bolted to the aft deck and supported by two struts aft. The tow post may be utilized for towing and mooring purposes.

An alternate transom mounted tow post (733 OB only) with bollard is also available for outboard and IO models.

3.8 ROPE GUARD.

An aluminum rope guard surrounds the outboard engines. It is supported with two struts which attach to the transom. The rope guard helps prevent slack tow lines from entangling the propellers. It also provides some collision protection for the outboard engines.

3.9 RADAR FRAME.

An aluminum RADAR frame is bolted to the deck aft and is braced to the transom. The RADAR frame platform facilitates the mounting of a RADAR antenna as

well as other electronic and navigation equipment. An integral towing bollard is provided on some models. A towing screen is provided on some models to protect crew from breaking tow lines.

3.10 ROPE REEL.

See Figure 3-10-1. An aluminum rope storage reel is bolted to the aft deck plate at the transom. A removable crank handle fits both port and starboard sides of the reel. It is stored in a plastic pouch which is mounted to the inside face of the transom.

CAUTION

DO NOT TOW FROM THE ROPE REEL. IT IS DESIGNED FOR TOW LINE STORAGE ONLY.

3.11 HEATER.

A diesel forced air heater is available only with the cabin option. It is located inside the control console within the cabin. It is thermostatically controlled and is electrically ignited. On outboard models, the diesel fuel tank is located within the control console. Filling is accomplished through a fuel fitting on the forward face of the cabin.

This page intentionally left blank.

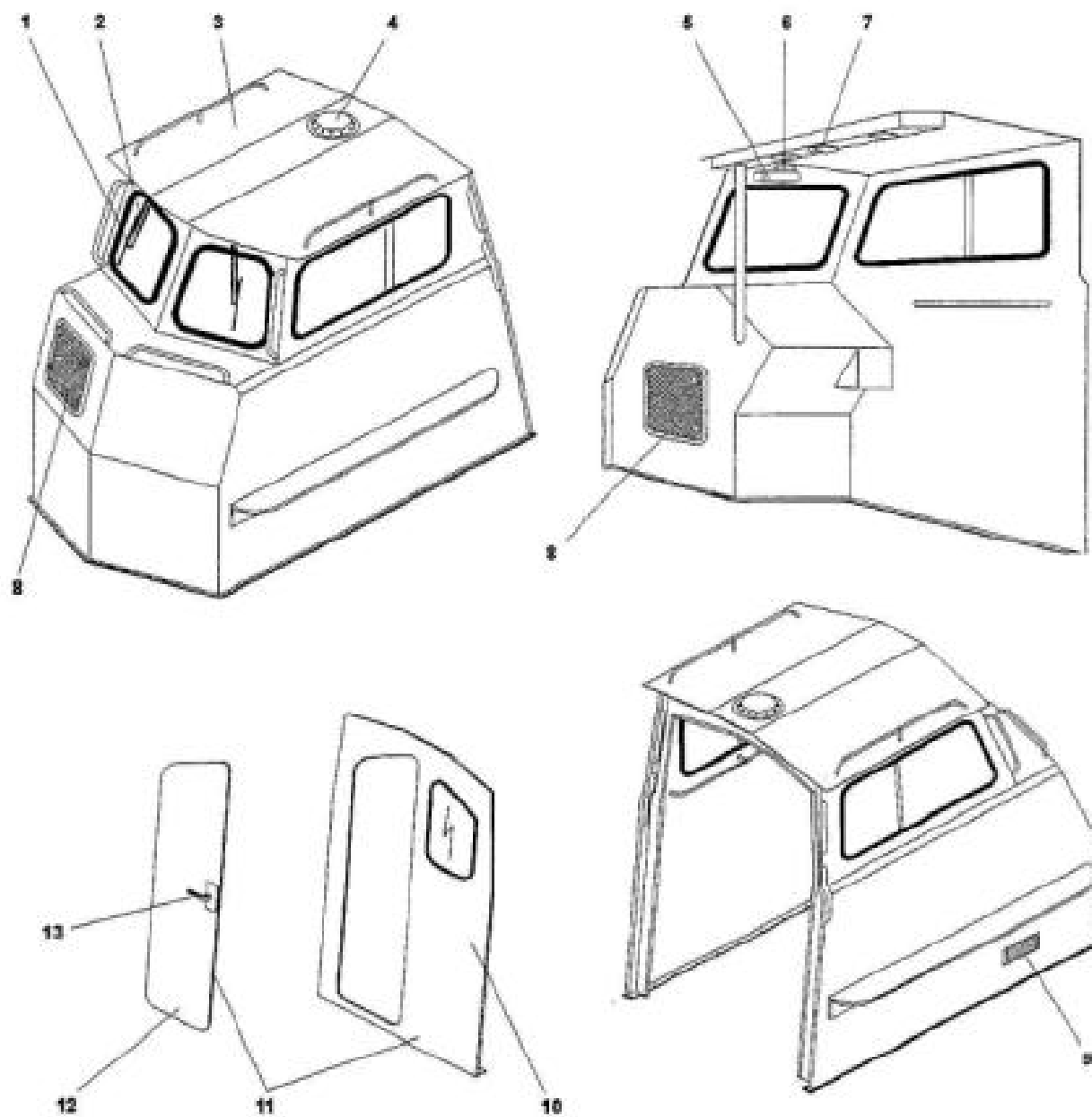


Figure 3-1-1 Cabin

Legend 3-1-1 Cabin

ITEM	PART NUMBER	DESCRIPTION	UNIT
1	W-B-10076	Wiper blade	set
2	W-B-10075	Pantographich wiper arm	1
3	Z-H-7339392	733 OB Cabin (specified color)	1
4	H-V-10020	Deck ventilator	1
5	W-P-10060	Wiper motor	1
6	H-P-15125	Deck plate 4"	1
7	E-L-40000	Dome light	1
	E-L-40000-1	Light bulb for E-L-40000	10
8	H-H-12300	Hatch (black)	1
9	H-V-10130	Louvered ventilator	1
10	M-P-73493-M	Aft bulkhead with window	1
11	Z-H-7349392	Bulkhead with door complete	1
12	C-D-73300	Door	1
13	C-D-73300-1	Door latch	1

Note: Fasteners not included

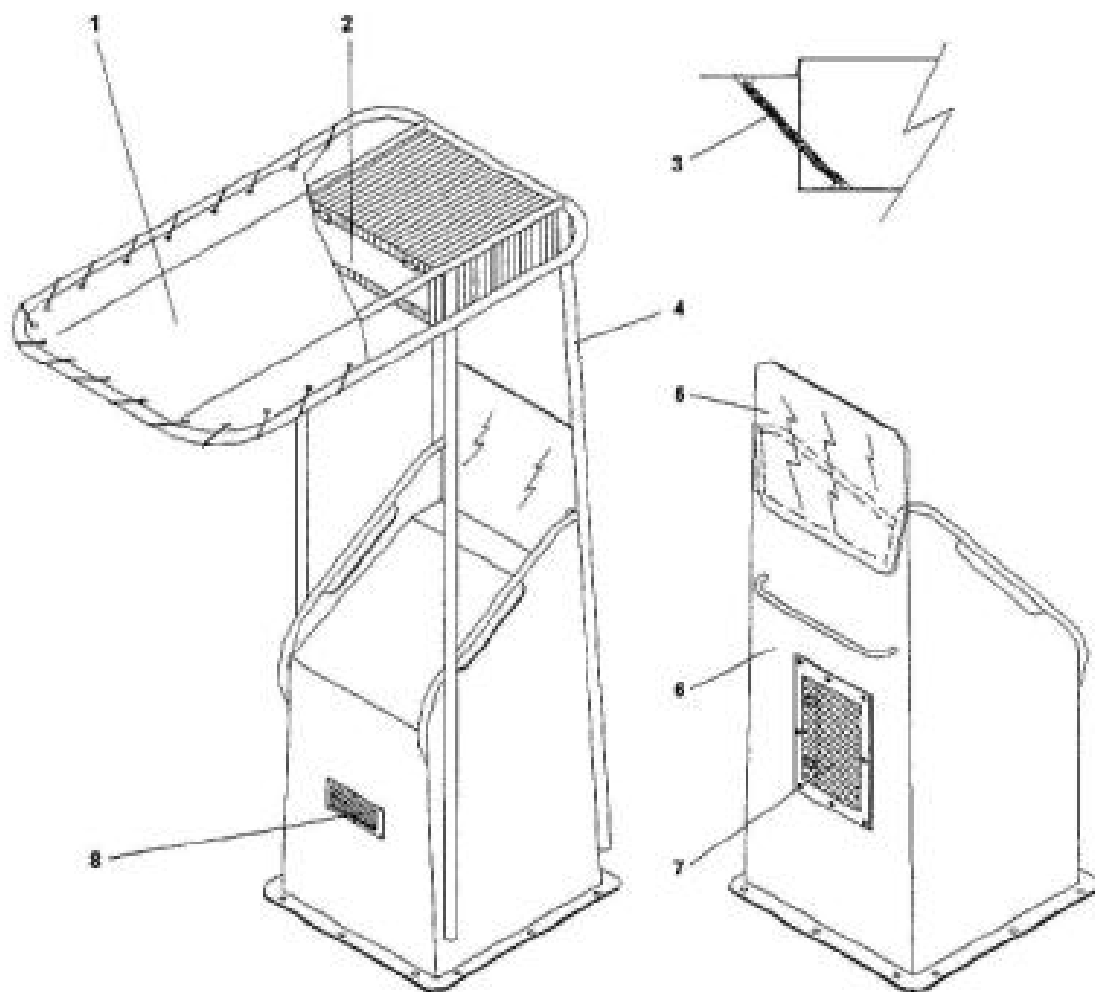


Figure 3-2-1 Patrol Console - Aluminum

Legend 3-2-1 Patrol Console - Aluminum

ITEM	PART NUMBER	DESCRIPTION	UNIT
1	T-T-59020	Fabric tee top	1
2	E-B-10700	Electronics box door	1
3	H-H-12140	Electronics box door spring	1
4	R-F-5902093	Complete T-top	1
5	W-S-59000	Windscreen	1
6	M-P-63074	Aluminum patrol console	1
7	H-H-12300	Hatch (black)	1
8	H-V-10130	Louvered ventilator	1

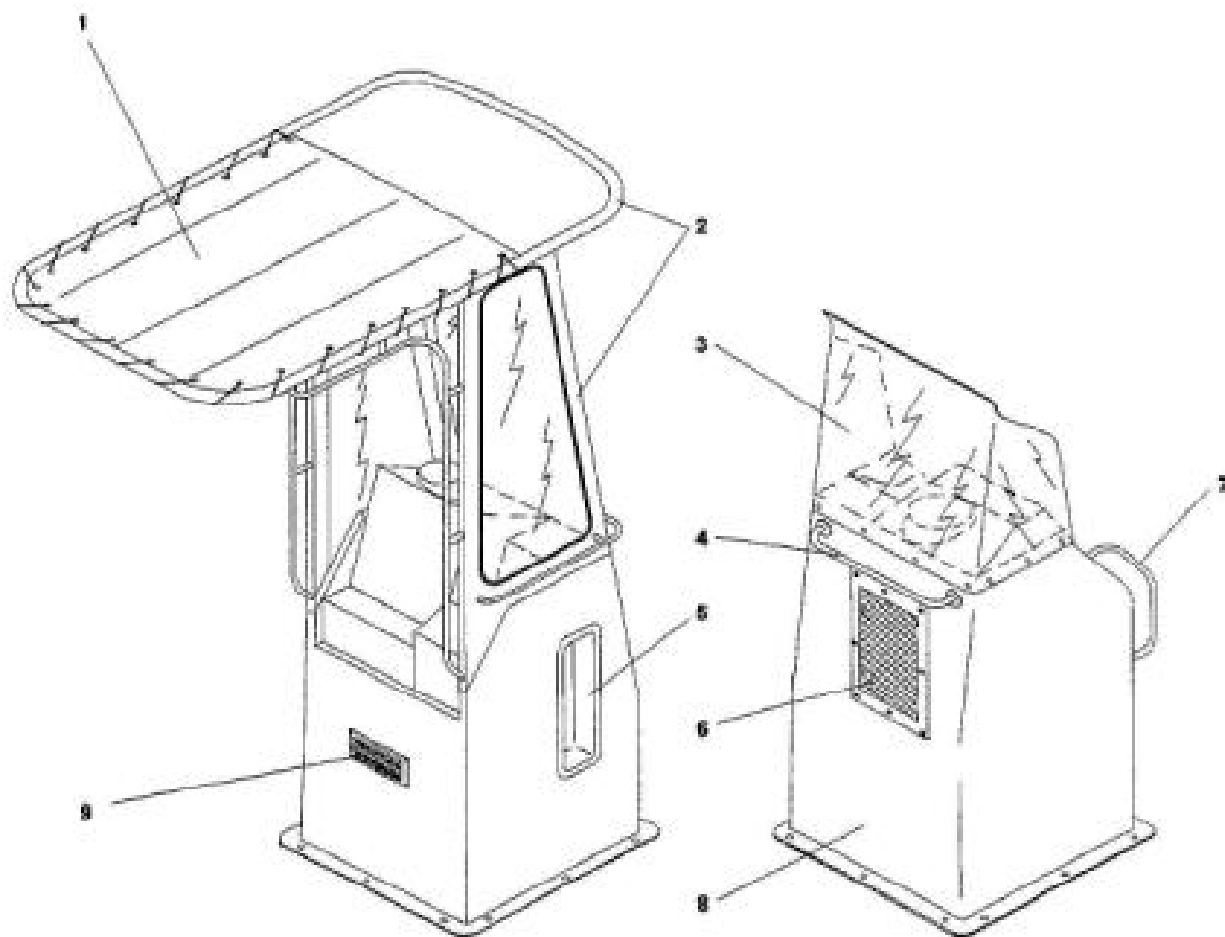


Figure 3-2-2 Patrol Console - Fibreglass (FRP)

Legend 3-2-2 Patrol Console - Fibreglass (FRP)

ITEM	PART NUMBER	DESCRIPTION	UNIT
1	C-C-5900194	Fabric tee top	1
2	R-F-5912094	Complete T-top	1
3	W-S-5900194	Windscreen (clear)	1
4	M-P-10036	Handrail	1
5	E-B-49010	Fire extinguisher box	1
6	H-H-12300	Hatch (black)	1
7	M-P-10037	Grab bar (aft)	1
8	G-C-5900194	Console GRP	1
9	H-V-10130	Louvered ventilator	

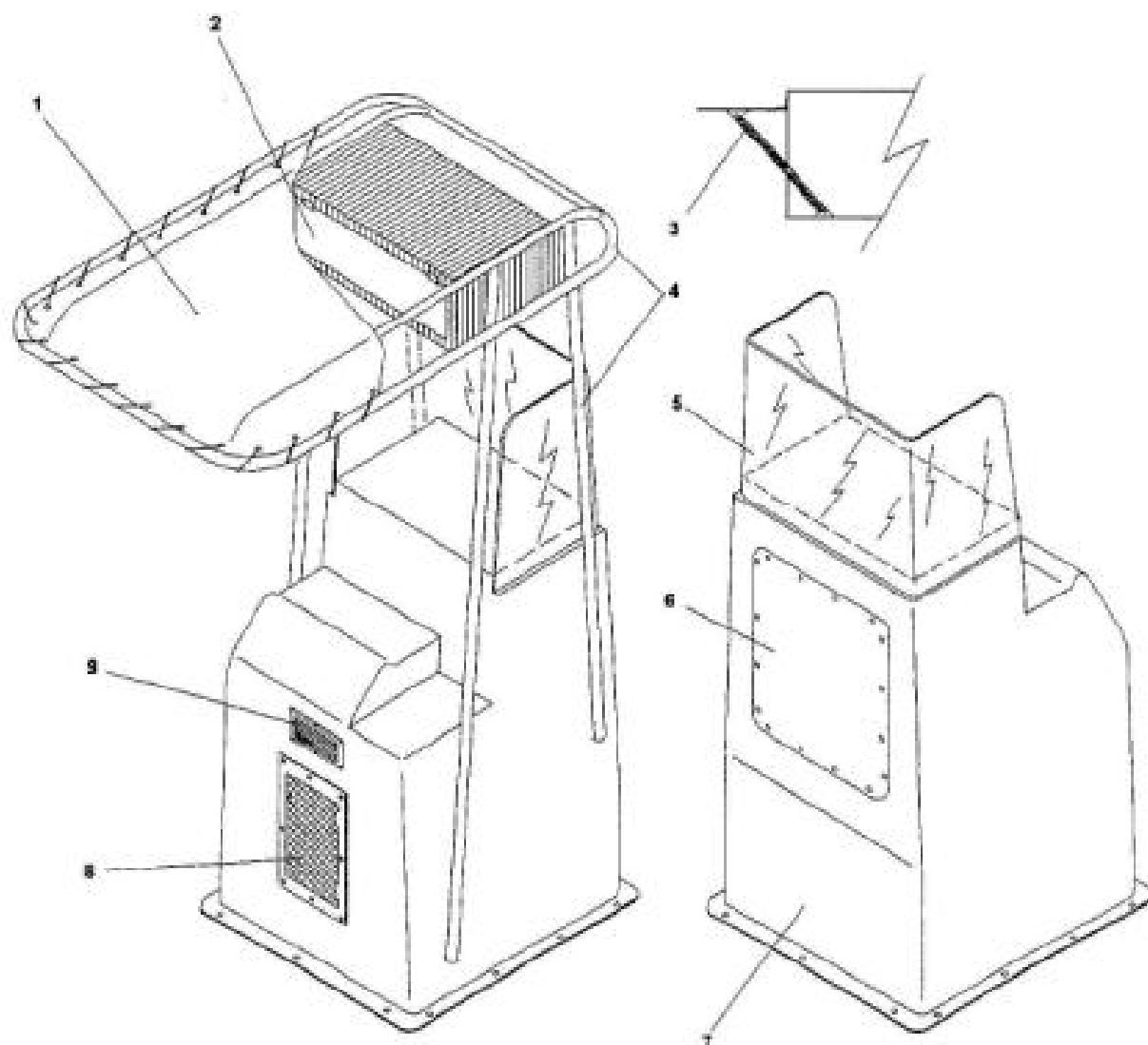


Figure 3-2-3 Patrol Console - Large Fibreglass (FRP)

Legend 3-2-3 Patrol Console - Large Fibreglass (FRP)

ITEM	PART NUMBER	DESCRIPTION	UNIT
1	T-T-73320-1	Fabric tee top	1
2	E-B-10700	Electronics box door	1
3	H-H-12140	Electronics box door spring	1
4	R-F-7332093	Complete tee top	1
5	W-S-10610	Windscreen	1
6	M-P-73374	Aluminum cover plate	1
7	G-C-7330191	Large standup console	1
8	H-H-12130	Hatch (black)	1
9	H-V-10130	Louvered ventilator	1

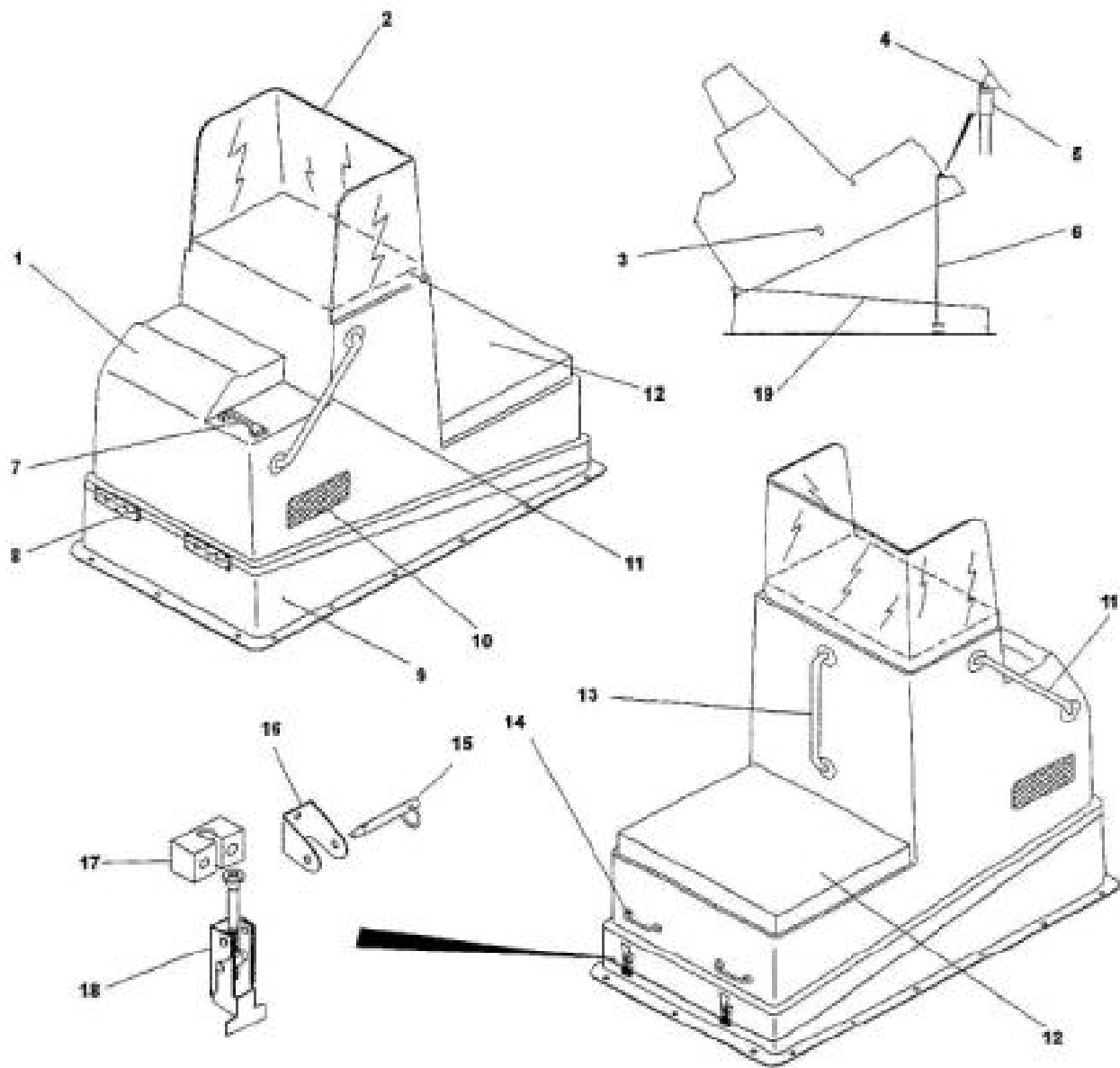


Figure 3-2-4 Patrol Console - 733 IO Fibreglass (FRP)

Legend 3-2-4 Patrol Console - 733 IO Fibreglass (FRP)

ITEM	PART NUMBER	DESCRIPTION	UNIT
1	G-C-7330291	*733 IO FRP console	1
2	W-S-73310	Windshield	1
3	H-H-50100	Holder for console support rod	1
4	H-H-50110	Hinge for console support rod	1
5	H-H-50115	Top cap for console support rod	1
6	C-R-50000-B	Console support rod	1
7	H-H-16160	Nylon handle	1
8	M-P-50205	Hinge	1
9	G-C-7330391	*FRP console coaming	1
10	G-C-50005-B	Air intake box	1
	S-V-50000	Air intake screen	1
11	M-P-10036	Handrail	1
12	C-N-49210	*Console cushion	1
13	M-P-10032	Handrail	1
14	H-H-16150	Handle	1
15	P-Q-50305	Quick pin for latch lock for H-L-53160-1	1
16	H-L-53160-1	Latch lock for H-L-53160	1
17	M-P-53160	Latch strike for H-L-53160	1
18	H-L-53160	Latch	1
19	R-N-25076	Neoprene gasket length 18'	ft
	R-N-26006	Foam gasket (overlay) length 18'	ft

Note: Fasteners not included

* Specify color

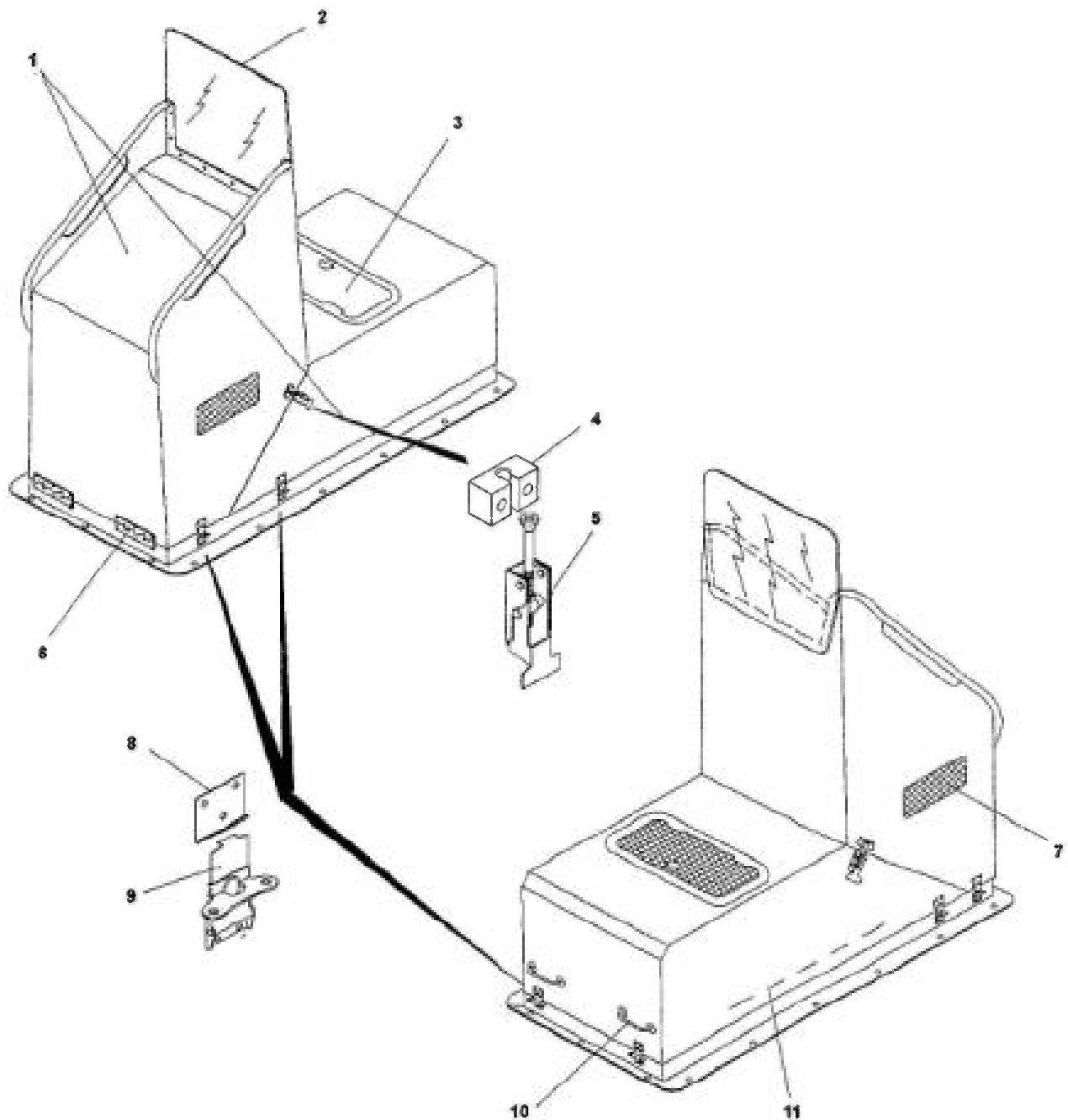


Figure 3-2-5 Patrol Console - 733 IO Aluminum

Legend 3-2-5 Patrol Console - 733 IO Aluminum

ITEM	PART NUMBER	DESCRIPTION	UNIT
1	M-P-73874	*733 IO aluminum console	1
2	W-S-73311	733 windshield	1
3	H-H-12310	Hatch	1
4	M-P-53160	Latch strike for H-L-53160	1
5	H-L-53160	Latch	1
6	M-P-50205	Hinge	1
7	G-C-50005-B	Air intake box	1
8	S-V-50000	Air intake screen	1
9	H-L-16300-1	Latch keeper plate for H-L-16300	1
10	H-L-16300	Latch (link lock style)	1
11	H-H-16150	Handle	1
	R-N-25076	Neoprene gasket length 20'	ft
	R-N-25027	Neoprene gasket (overlay) length 20'	ft

Note: Fasteners not included

* Specify color

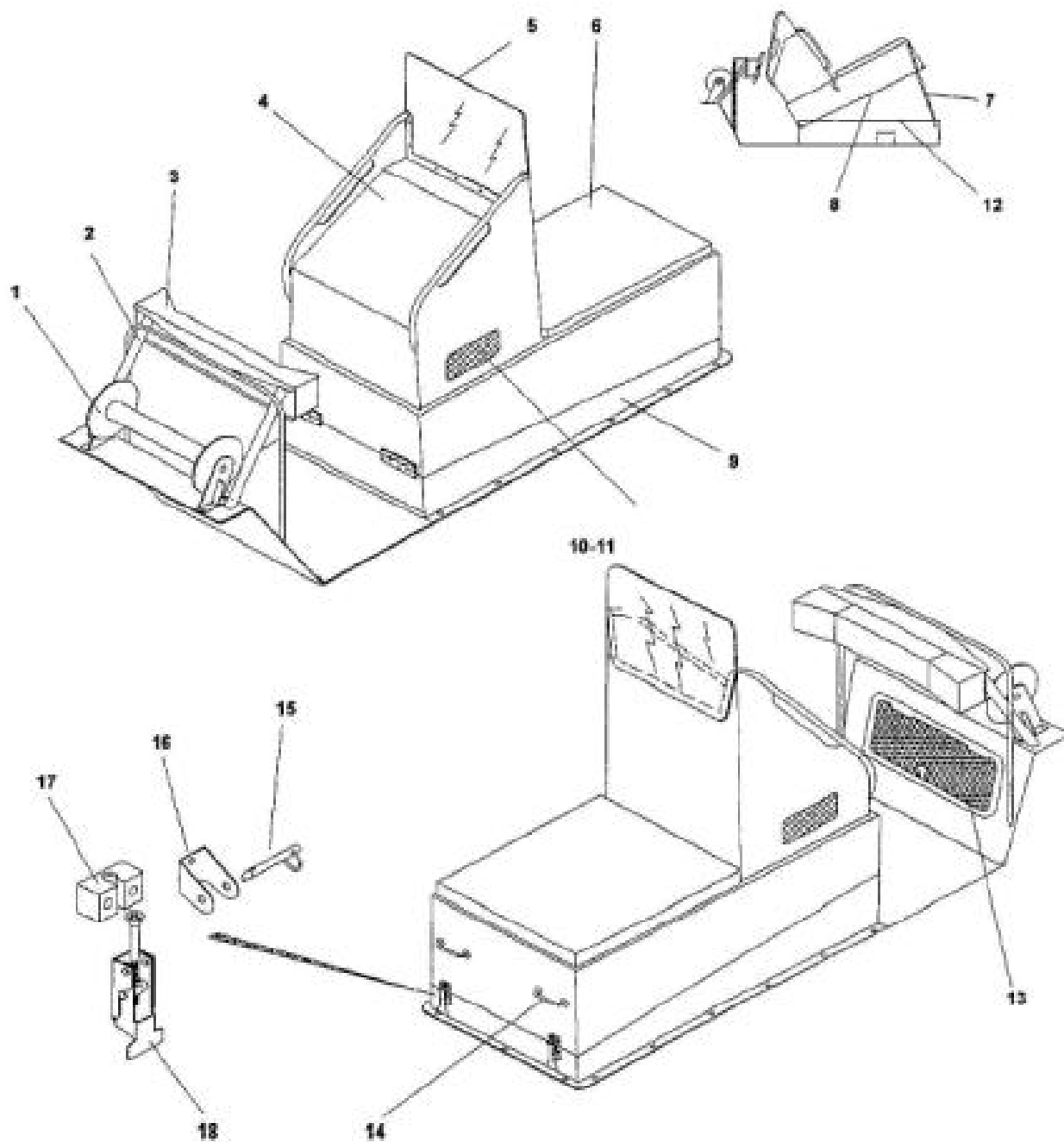


Figure 3-2-6 Patrol Console - 630 IO Aluminum

Legend 3-2-6 Patrol Console - 630 IO Aluminum

ITEM	PART NUMBER	DESCRIPTION	UNIT
1		Rope reel (see Figure 3-10-1)	1
2	M-P-63821	*Bolster	1
3	C-N-49118	*Cushion for bolster	1
4	M-P-63815	*Mid engine aluminum console	1
5		Windscreen	1
6	C-N-63034	*Cushion for 638 mid engine aluminum console	1
7	M-P-63828	Console support rod	1
8	M-P-63820	Console gasket support angle	1
9	M-P-63816	*Coaming	1
10	G-C-50005	Air intake box	1
11	S-V-50000	Air intake screen	1
12	R-N-25082	Neoprene gasket length 15'	ft
13	H-H-12310	Hatch	1
14	H-H-16150	Handle	1
15	P-Q-50305	Quick pin for latch lock for H-L-53160-1	1
16	H-L-53160-1	Latch lock for H-L-53160	1
17	M-P-53160	Latch strike for H-L-53160	1
18	H-L-53160	Latch	1

Note: Fasteners not included

* Specify color

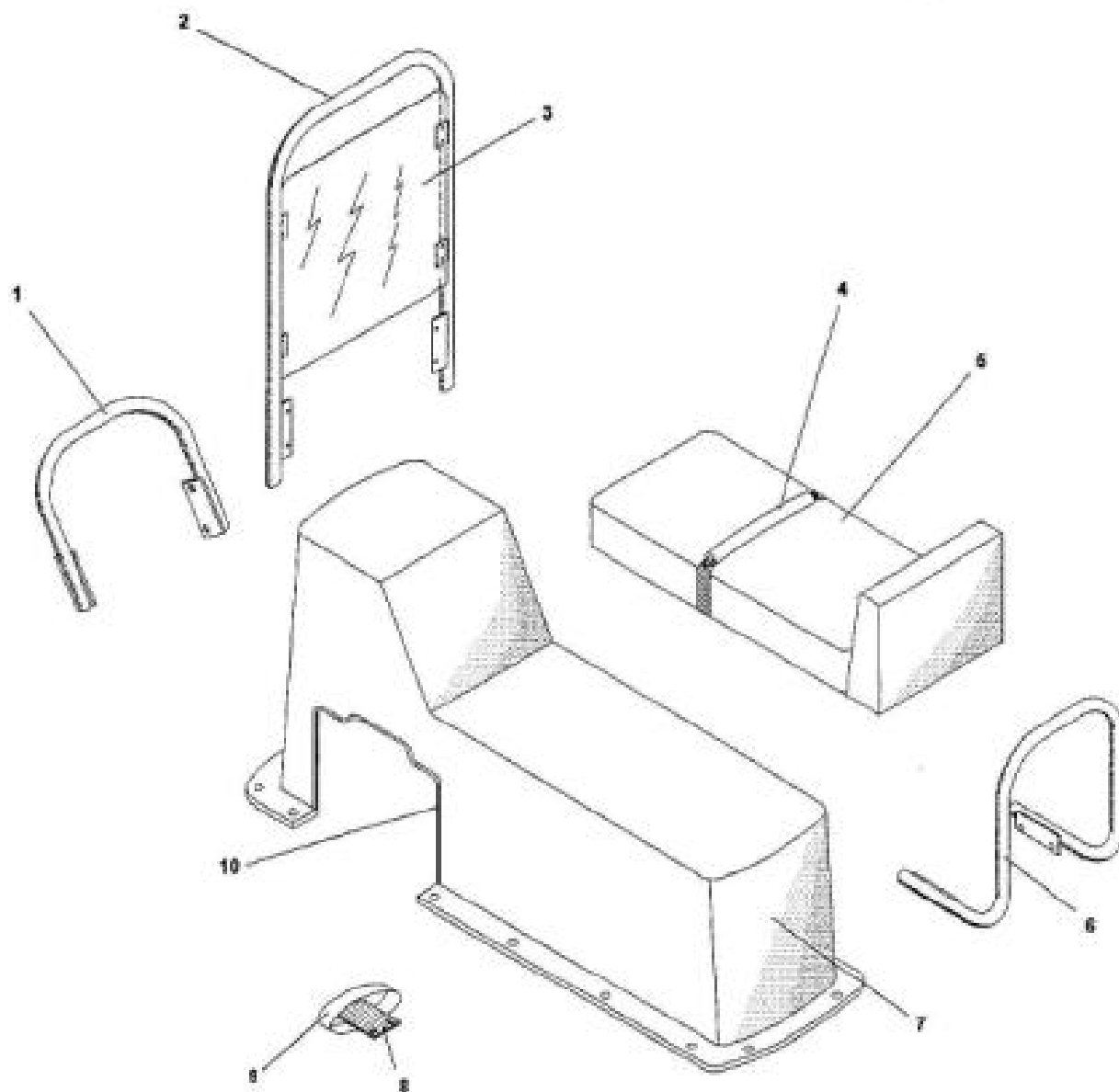


Figure 3-3-1 Inline Console

Legend 3-3-1 Inline Console

ITEM	PART NUMBER	DESCRIPTION	UNIT
1	M-P-10035	Forward handle	1
2	M-P-5904090-1	Windscreen frame	1
3	W-S-20825	Windscreen	1
4	M-P-10211	Seat belt (non adjustable)	1
5	C-N-49047G	Cushion (grey)	1
6	M-P-10030-P	Aft handle	1
7	G-C-4400190	Inline console	1
8	M-P-23016	Foot stirrup plate	1
9	M-P-23017	Foot stirrup fabric	1
10	H-T-10010	Edge trim (black)	ft

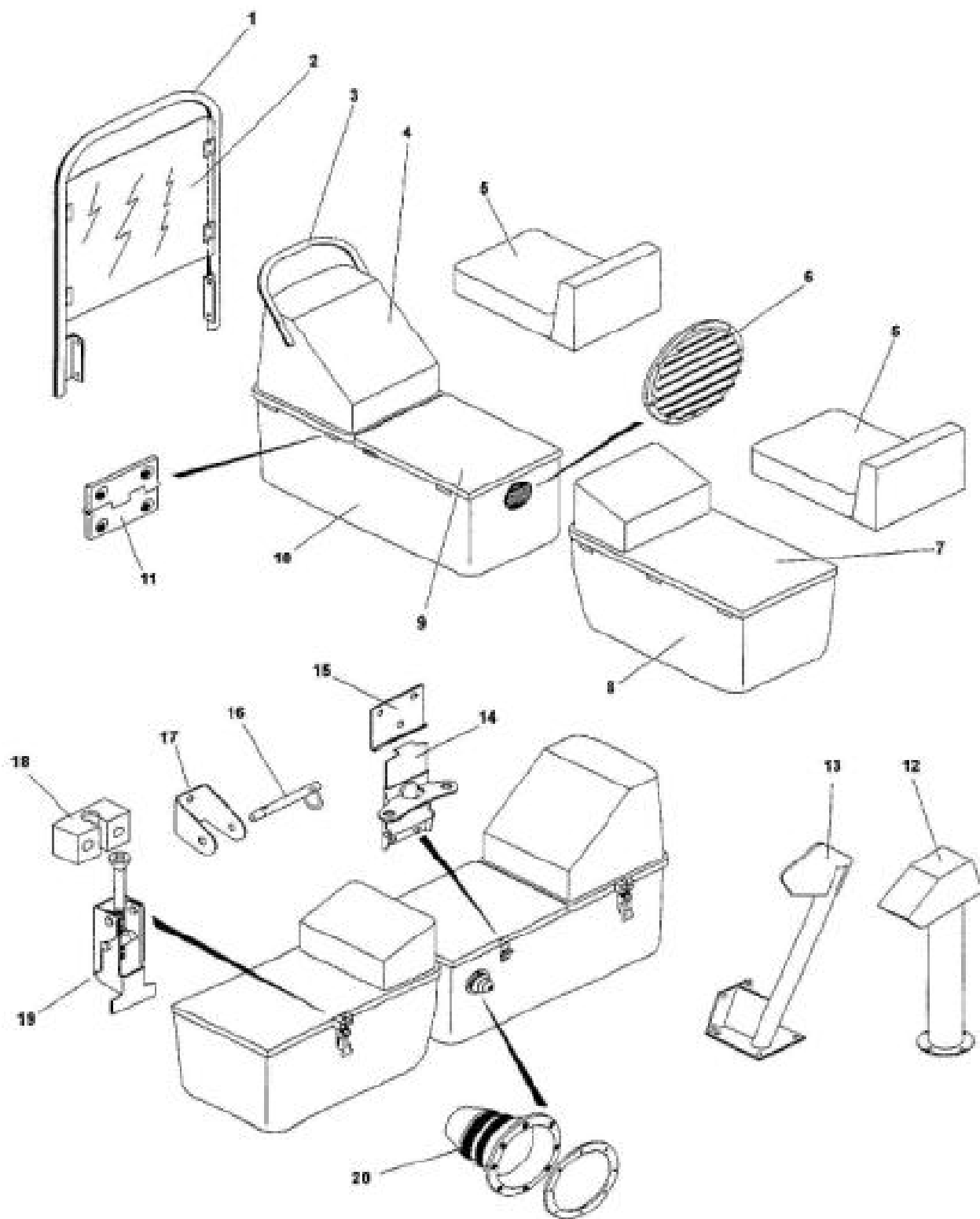


Figure 3-3-2 Delta Console

Legend 3-3-2 Delta Console

ITEM	PART NUMBER	DESCRIPTION	UNIT
1	M-P-20825-1	Windscreen frame	1
2		Windscreen	1
3	M-P-73373-2	Handle	1
4	G-C-5900190	Helm console top	1
5	C-N-49050G	Cushion (grey)	1
6	H-V-10130	Louvered ventilator	1
7	G-C-5900490	Navigator console top	1
8	G-C-5900590	Navigator console base	1
9	G-C-5900290	Helm seat base	1
10	G-C-5900390	Helm console base	1
11	H-H-15118	Hinge (stainless steel)	1
12	M-P-74373	Control post for binnacle control	1
13	M-P-73373	Control bracket for sidemount control	1
14	H-L-16300	Latch link lock	1
15	H-L-16300-1	Latch keeper plate	1
16	P-Q-50305	Quick pin for latch lock	1
17	H-L-53160-1	Latch lock	1
18	M-P-53160	Latch strike for H-L-53160	1
19	H-L-53160	Latch	1
20	H-B-10200	Motorwell boot	1

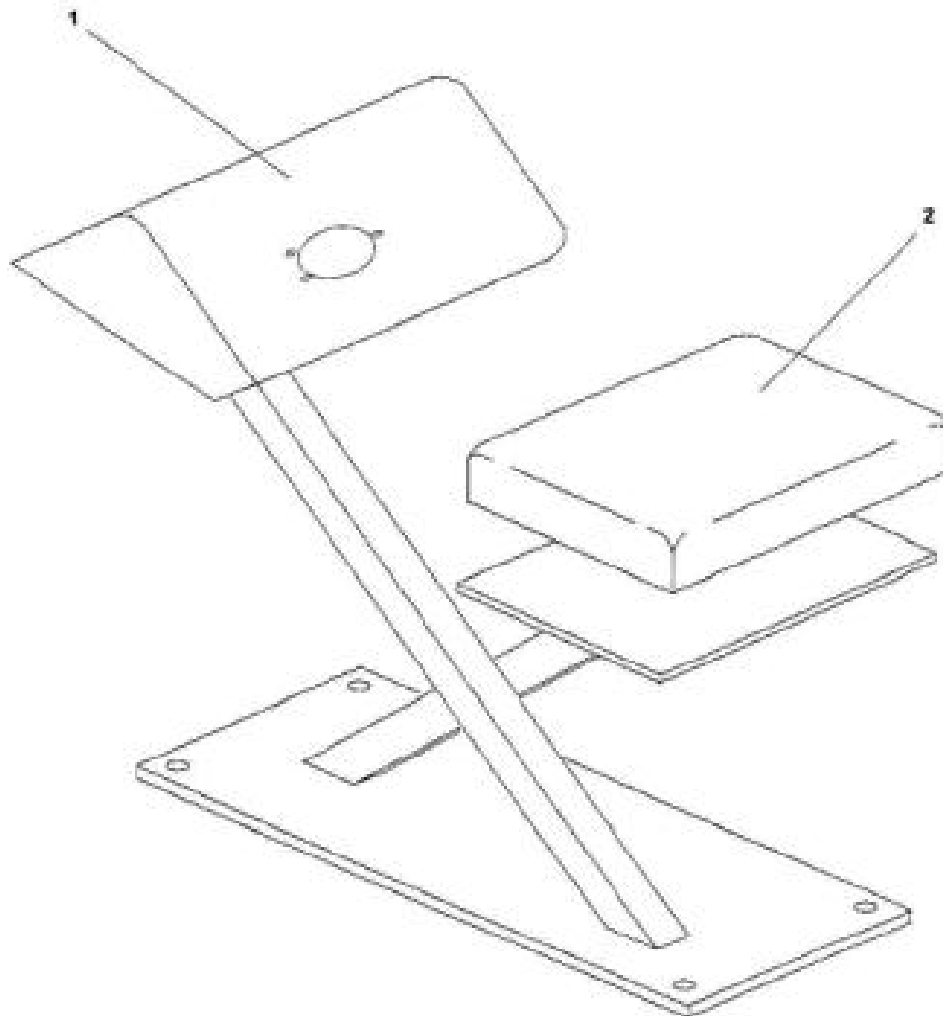


Figure 3-3-3 Small Boat Console

Legend 3-3-3 Small Boat Console

ITEM	PART NUMBER	DESCRIPTION	UNIT
1	M-P-38001	Small boat console	1
2	C-N-3800194	Windshield	1

Note: Fasteners not included

* Specify color

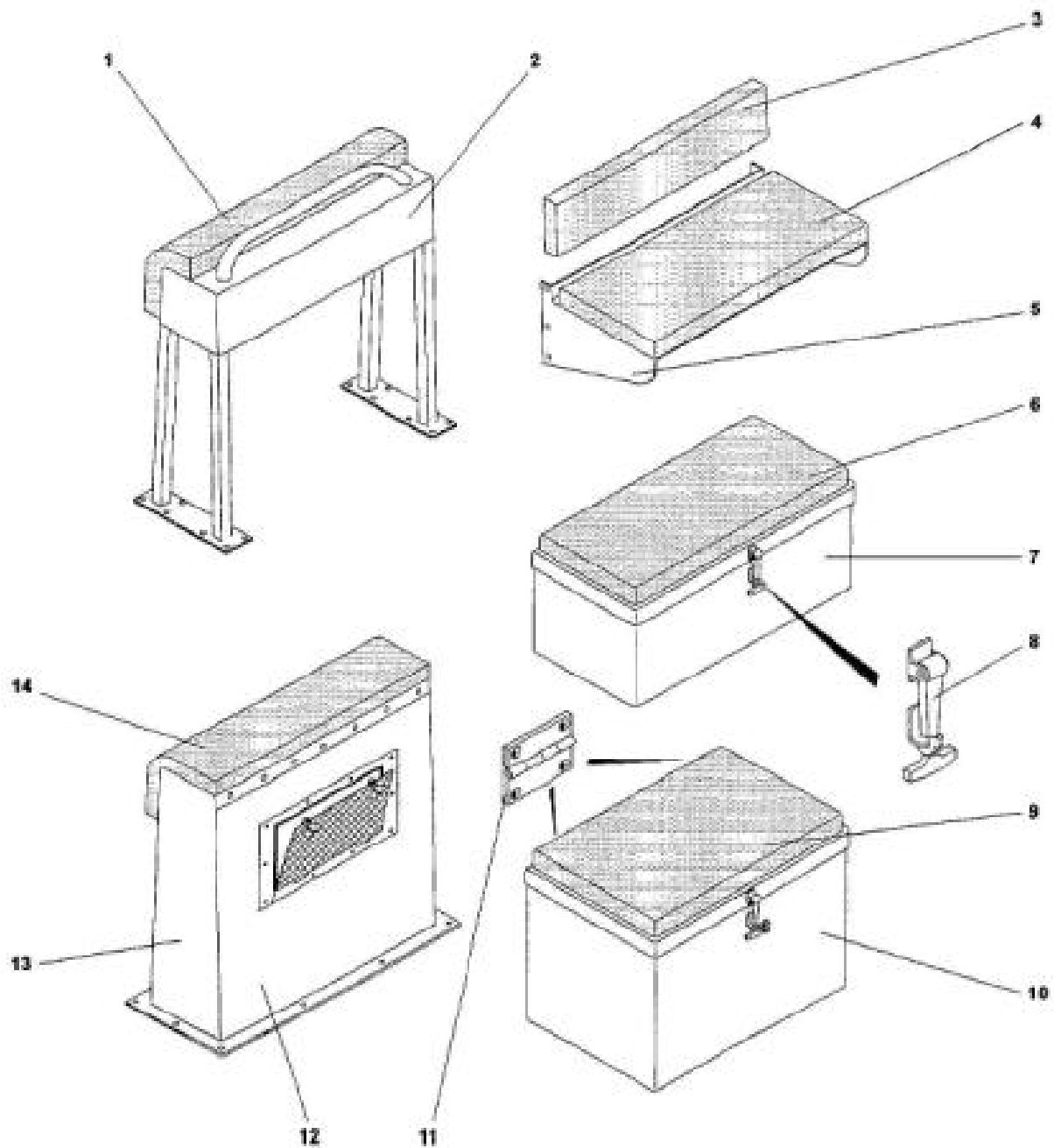


Figure 3-4-1 Bolsters, Seating and Storage Lockers

Legend 3-4-1 Bolsters, Seating and Storage Lockers

ITEM	PART NUMBER	DESCRIPTION	UNIT
1	C-N-63026-4	Cushion for basic bolster	1
2	M-P-63026-1	Basic bolster frame	1
3	C-N-63026-2	Backrest cushion for basic bolster	1
4	C-N-63026A	Cushion for basic bolster aft seat	1
5	M-P-63126	Basic bolster aft seat	1
6	C-N-63030G	Cushion for bolster storage seat	1
7	M-P-63021	Basic bolster storage seat	1
8	H-L-10400	Latch	1
9	C-N-63032G	Cushion for foot locker	1
10	M-P-58521	Foot locker	1
11	H-H-15118	Hinge	1
12	H-H-12310	Hatch	1
13	M-P-59077	Storage bolster	1
14	C-N-49060	Cushion for storage bolster	1

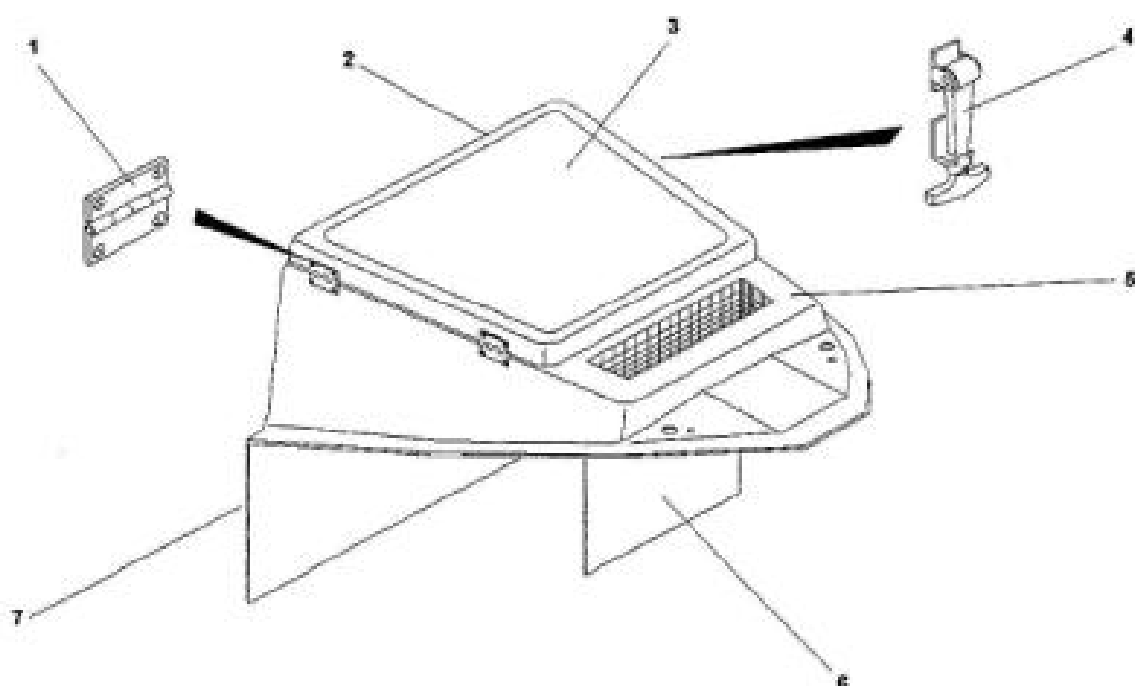


Figure 3-5-1 Bow Box

Legend 3-S-1 Bow Box

ITEM	PART NUMBER	DESCRIPTION	UNIT
1	H-H-15110	Hinge	1
2	G-G-7330494-2	Bow Box lid	1
3	D-N-50010	Non-skid (24" width)	sq.ft
	D-N-50005	Edge seal (150ml tube)	1
4	H-L-10400	Latch	1
5	G-G-7330494	Bow Box	1
6	M-P-733007	733Bow Box divider	1
7	H-V-10130	Louvered ventilator	1

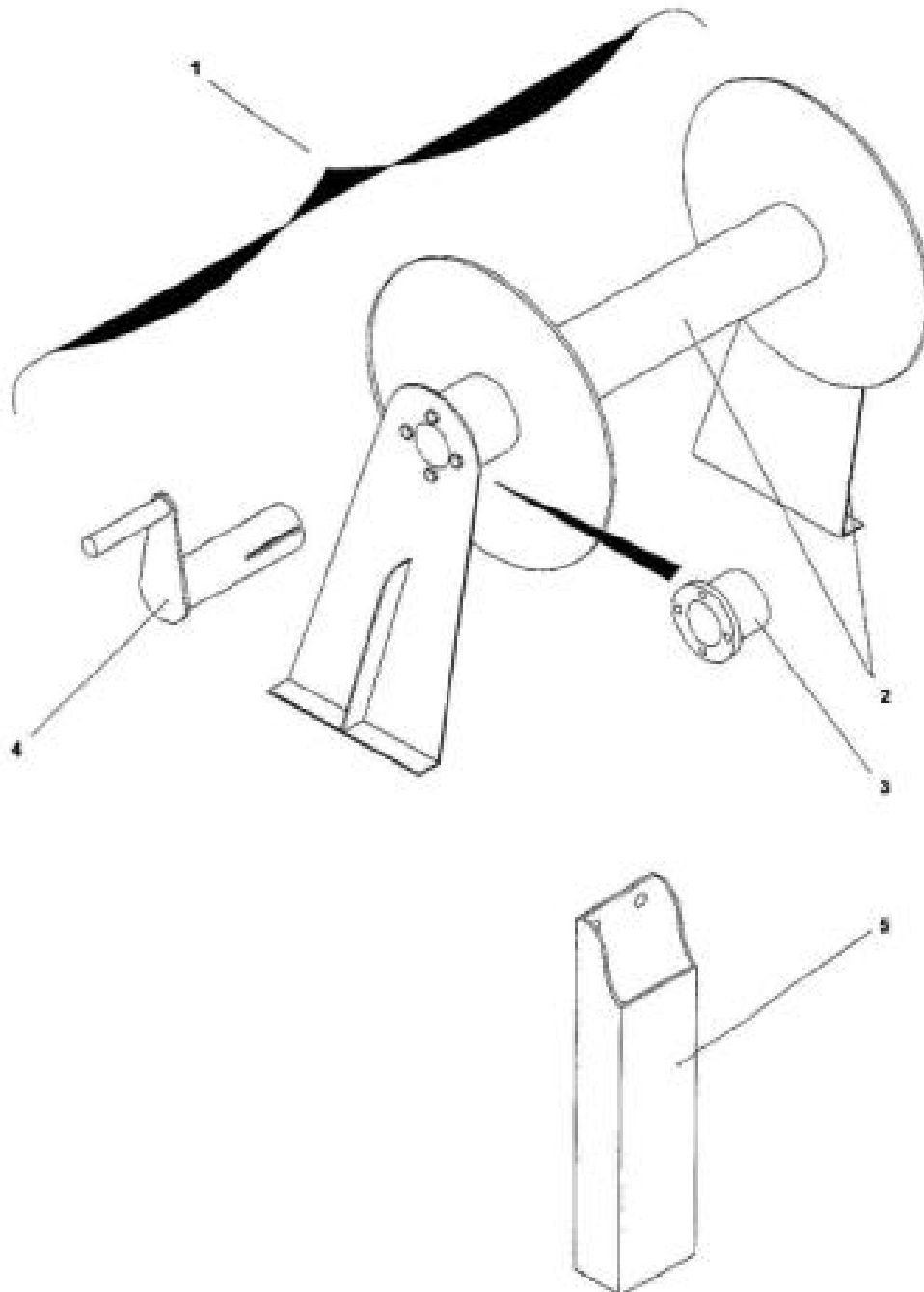


Figure 3-10-1 Rope Reel

Legend 3-10-1 Rope Reel

ITEM	PART NUMBER	DESCRIPTION	HANDLE	REEL	UNIT
1	Z-H-5931194	Rope reel for 733 OB w/tow post	short	tail	1
	Z-H-5931194	Rope reel for 733 OB w/radar stand	short	tail	1
	Z-H-5931194	Rope reel for 733 OB w/SR frame	short	tail	1
	Z-H-5931194	Rope reel for 733 IO w/tow post	short	tail	1
	Z-H-5931194	Rope reel for 733 IO w/radar stand	short	tail	1
	Z-H-5931194	Rope reel for 733 IO w/SR frame	short	tail	1
	Z-H-5931194	Rope reel for 630 OB w/tow post	short	tail	1
	Z-H-5901194	Rope reel for 630 OB w/radar stand	long	low	1
	Z-H-5931194	Rope reel for 630 OB w/SR frame	short	tail	1
	Z-H-5931194	Rope reel for 630 IO w/tow post	short	tail	1
	Z-H-5901194	Rope reel for 630 IO w/radar stand	long	low	1
	Z-H-5931194	Rope reel for 630 IO w/SR frame	short	tail	1
	Z-H-5931194	Rope reel for 590 OB w/tow post	short	tail	1
	Z-H-5901194	Rope reel for 590 OB w/radar stand	long	low	1
	Z-H-5921194	Rope reel for 590 OB w/SR frame	short	low	1
	Z-H-5931194	Rope reel for 590 IO w/tow post	short	tail	1
	Z-H-5921194	Rope reel for 590 IO w/SR frame	short	low	1
	Z-H-6381194	Rope reel for 630 mid engine	long	tail	1
	Z-H-6481190	Rope reel for 640 IO	NA	low	1
	Z-H-6381190	Rope reel for 648 IO	long	tail	1
2	M-P-59011-1	Rope reel tail			1
	M-P-59211-1	Rope reel low			1
3	B-R-10055	Bushing			2
4	M-P-59011-2	Handle long			1
	M-P-59211-2	Handle short			1
5	H-H-16230	Pouch for handle			1